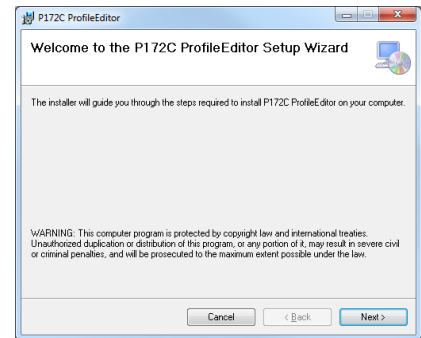


Alert-iT Profile Editor.

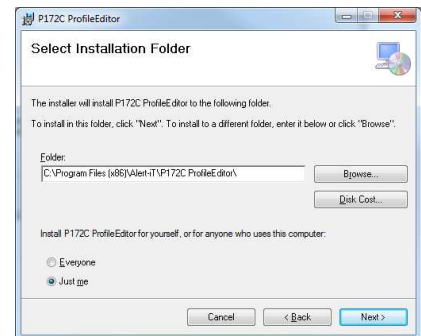
Installation

- 1) Open “**My Computer**” and browse to the “**Alert-iT**” USB drive. Run the “**Alert-iT Profile Editor Setup.exe**” file. Follow the instructions in the installation wizard.

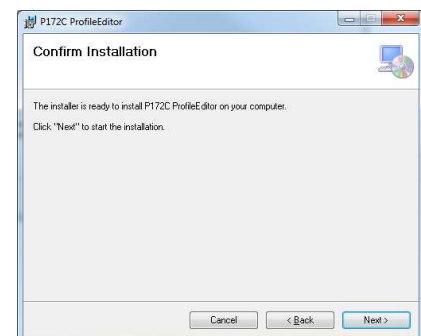
- a. Click “**Next >**”.



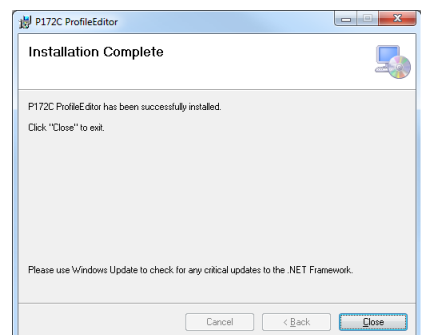
- b. Click “**Next >**”.



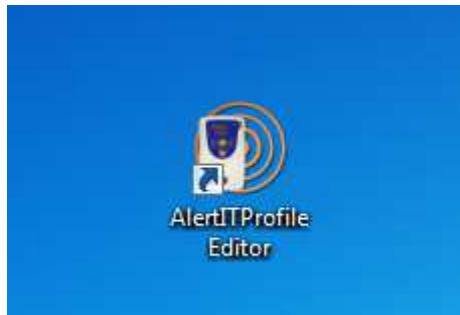
- c. Click “**Next >**” to start the installation.



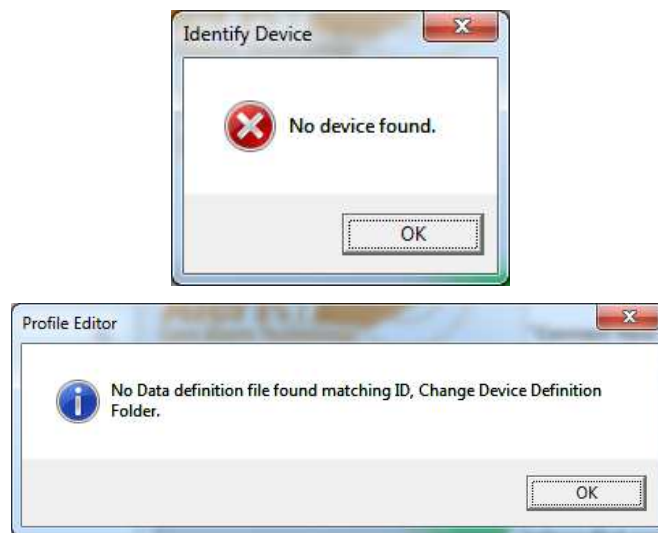
- d. If a UAC warning pops up, click “**Yes**” to continue.
- e. Once installation has completed click “**Close**”.



- 2) Once installation has completed, you will have an icon on your desktop;



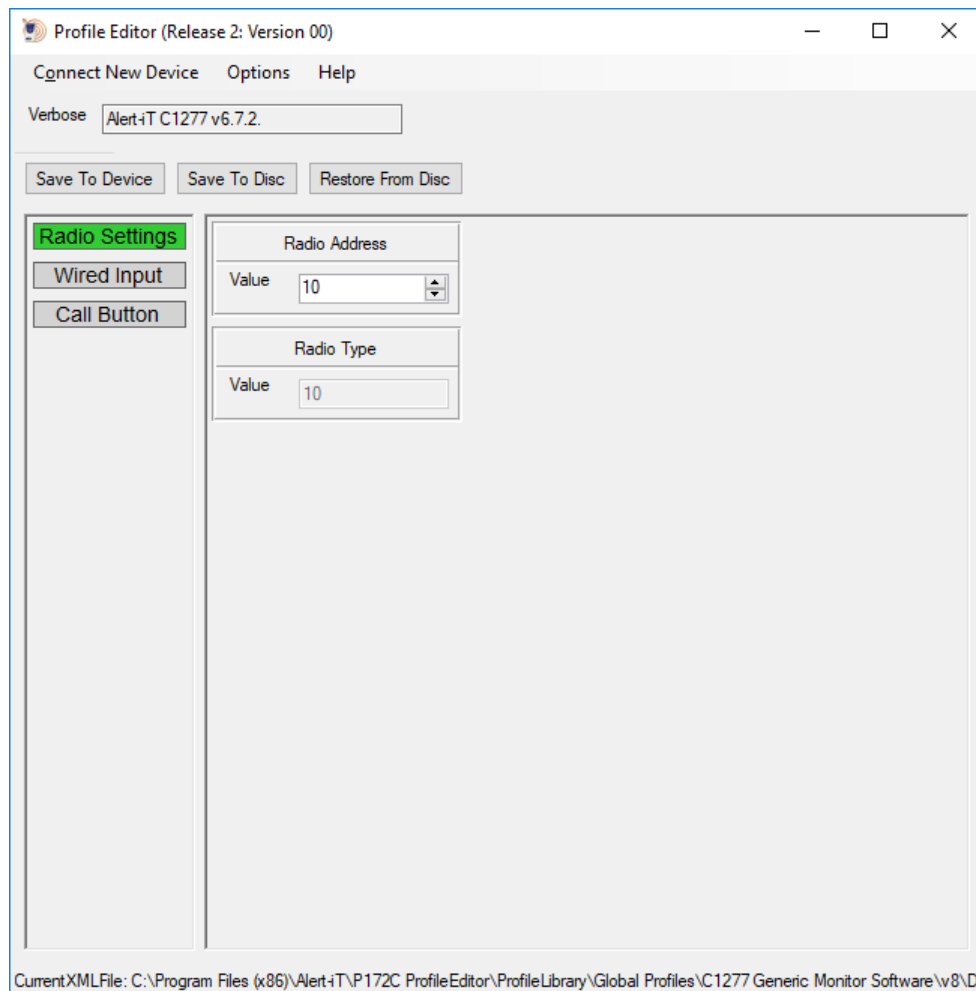
- 3) If no alert-it product is connected when the program is launched, you will get this error;



- 4) Connect your product to the PC and click **“Connect New Device”**;



- 5) A similar page as shown below should be displayed. The shown page is for a P163. A different product will display a similar but not identical page as each product has different functionality.



The buttons on the left select the group of settings to edit. The panel to the right of the group of buttons contain the settings values. These can be edited.

Note: hovering the cursor over the group buttons / setting titles displays extra information.

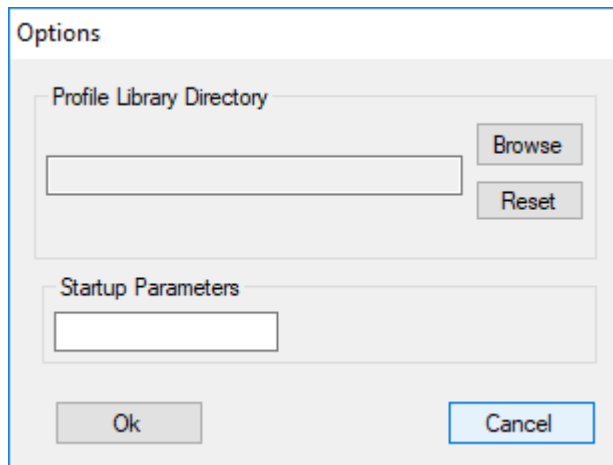
Menu Items

Connect New Device

Whenever a new device is connected to the computer, this menu item should be selected so that the correct profile is selected and the new device read.

Options

The options menu item brings up the following dialog.



The Profile Library Directory selects the directory path where the device profile files are stored. By default the files are stored in the ProfileLibrary directory in the same location as the application. The Browse button allows a new path to be selected. The Reset button resets it back to the default path which is displayed as an empty box.

The Start-up Parameters are for advanced settings and should be left blank normally.

To enable advanced mode enter ***"/e1"*** then click ***"Ok"*** and restart the program.

To enable the console window enter ***"/c1"*** then click ***"Ok"*** and restart the program.

To enable both, enter ***"/e1 /c1"***, and restart.

Help

This brings up an About screen and this help file.

Buttons

Save To Device

This saves any changes you have made to the device.

Save To Disc

This saves the current device configuration to a file (.uld) so it can be restored later.

Restore From Disc

This loads in previously saved data (.uld), you still need to click “**Save to Device**” to update the device.

Please Note: The program cannot differentiate between some products, meaning it finds multiple profiles that it thinks matches. So you may have to manually choose the right profile from a list that will pop up when you click “**Connect new device**”. If you expand the list to the right so you can see the whole filename, the correct file will have your product name at the end.

I.e. for a “**P161 Door Sensor**” use “DataDefinition Nodes **P161.xml**”